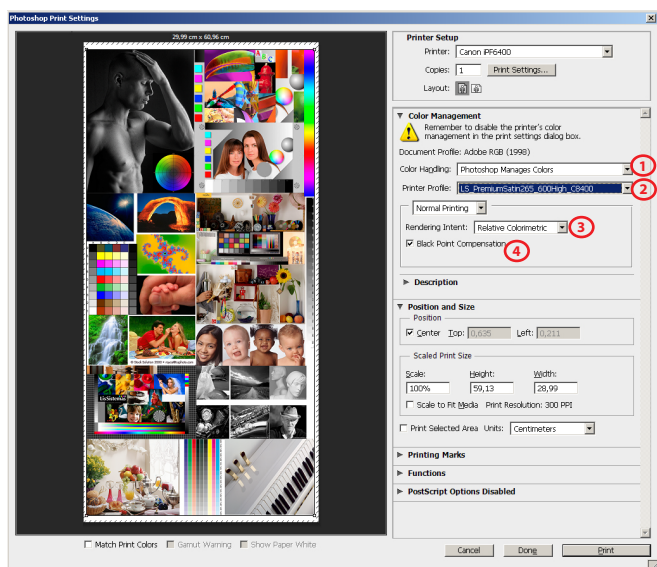


GUIDE FOR PRINTING ON WINDOWS

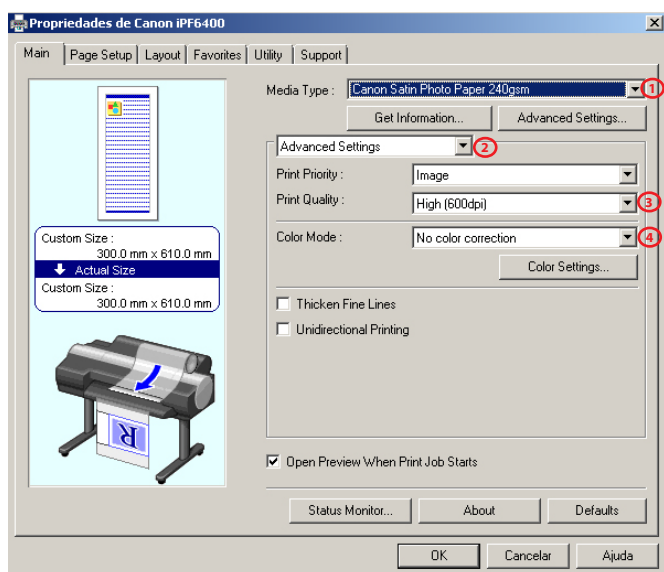
Install Profiles on Windows ---> c:/windows/system32/spool/drivers/color

PHOTOSHOP SETTINGS



- 1) Color Handling - Photoshop Manages Colors
- 2) Printer Profile
LS_EconomicCanvasMatt280_600Std_Cx100_MK.icc
- 3) Rendering Intent - Relative Colorimetric
- 4) Black Point Compensation activated

DRIVER SETTINGS

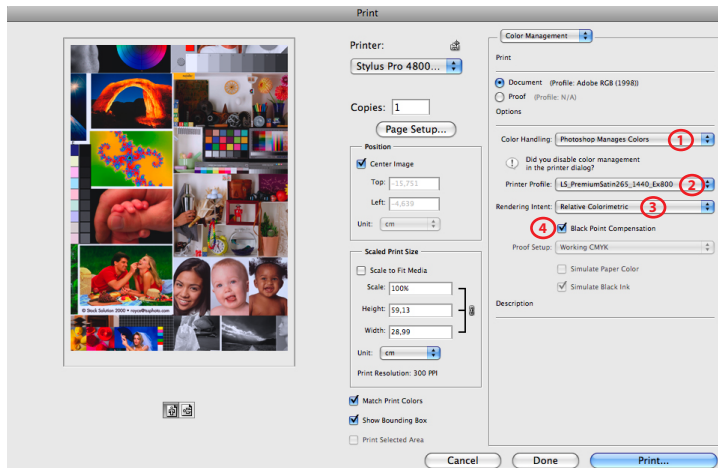


- 1) Media Type
Special 6
- 2) Advanced Settings
- 3) Print Quality - *Standard (600dpi)*
- 4) Color Mode - No color correction

GUIDE FOR PRINTING ON MAC OS X

Install Profiles on Mac OS X ---> Macintosh HD > User > Library > ColorSync > Profiles

PHOTOSHOP SETTINGS



1) Color Handling - Photoshop Manages Colors

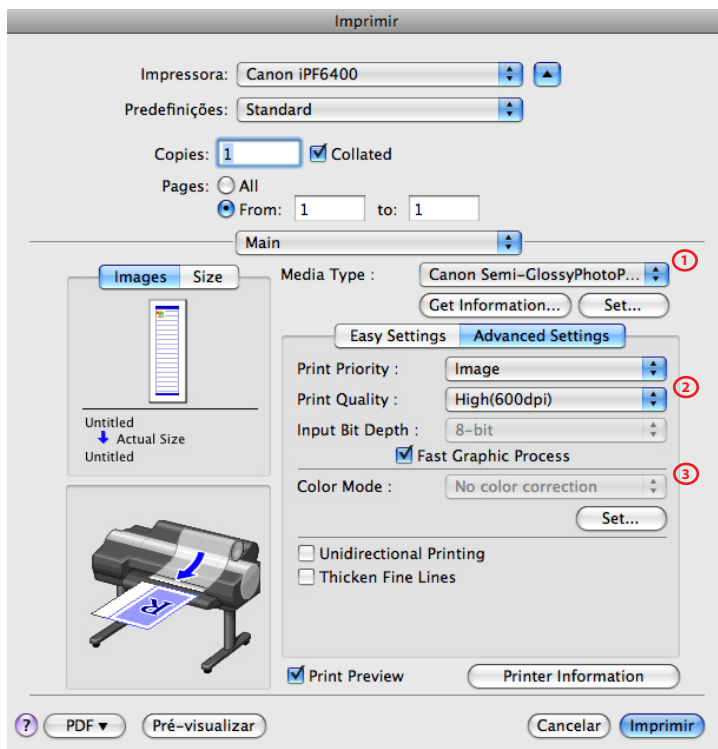
2) Printer Profile

LS_EconomicCanvasMatt280_600Std_Cx100_MK.icc

3) Rendering Intent - Relative Colorimetric

4) Black Point Compensation activated

DRIVER SETTINGS



1) Media Type

Special 6

2) Print Quality - Standard (600dpi)

3) Color Mode - No color correction