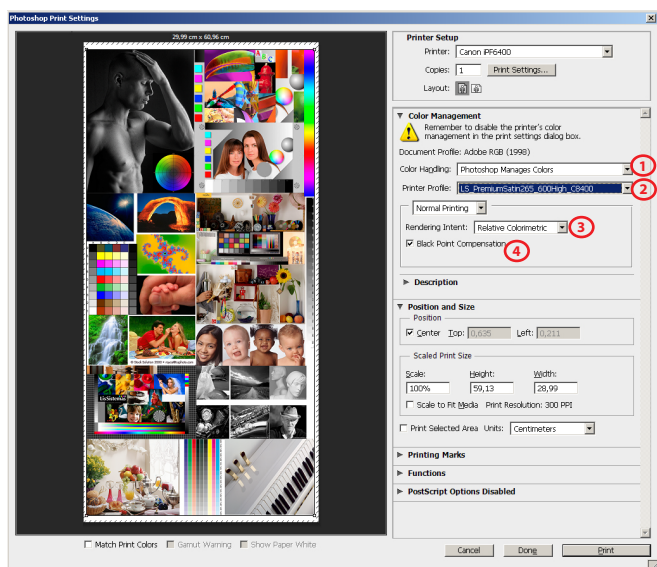


## GUIDE FOR PRINTING ON WINDOWS

Install Profiles on Windows ---> c:/windows/system32/spool/drivers/color

## PHOTOSHOP SETTINGS



1) Color Handling - Photoshop Manages Colors

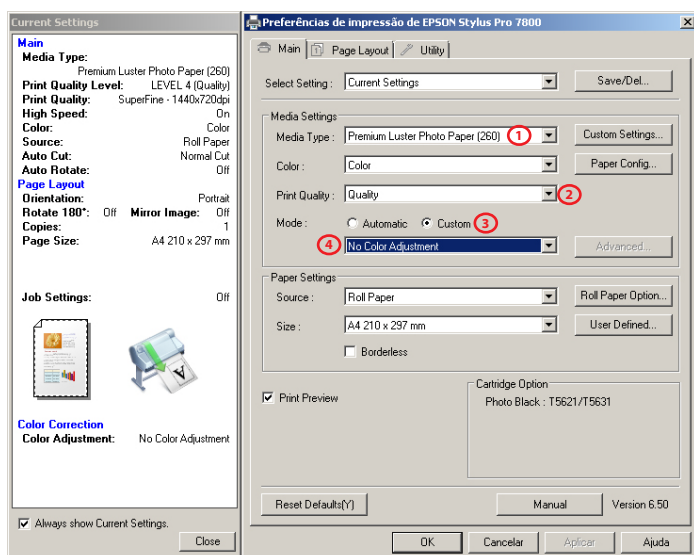
2) Printer Profile

*LS\_EconomicCanvasMatt280\_720\_EP6\_8000\_MK.icm*

3) Rendering Intent - Relative Colorimetric

4) Black Point Compensation activated

## DRIVER SETTINGS



1) Media Type  
*Canvas*

2) Print Quality - *Quality 2 (720x720ppp)*

3) Mode - Custom

4) No Color Adjustment



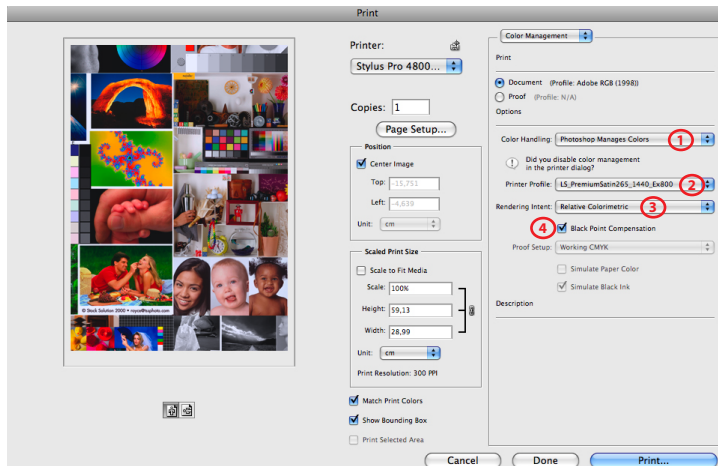
EPSON SC-P6000/P8000

LS ECONOMIC CANVAS MATT 280g

## GUIDE FOR PRINTING ON MAC OS X

Install Profiles on Mac OS X ---> Macintosh HD > Library > ColorSync > Profiles

## PHOTOSHOP SETTINGS



1) Color Handling - Photoshop Manages Colors

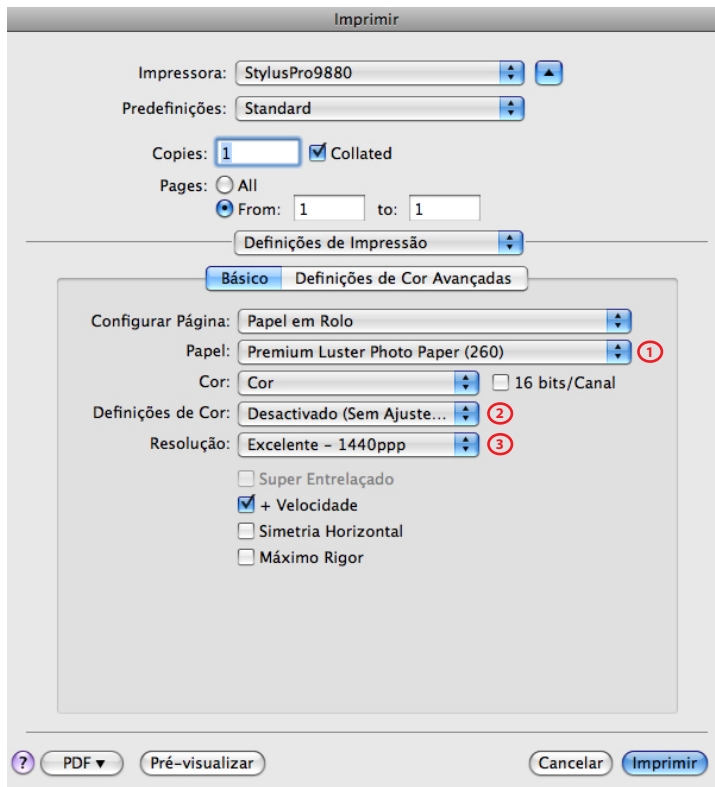
2) Printer Profile

*LS\_EconomicCanvasMatt280\_720\_EP6\_8000\_MK.icm*

3) Rendering Intent - Relative Colorimetric

4) Black Point Compensation activated

## DRIVER SETTINGS



1) Media Type  
*Canvas*

2) Color Mode - No Color Adjustment

3) Print Quality - Quality 2 (720x720ppp)