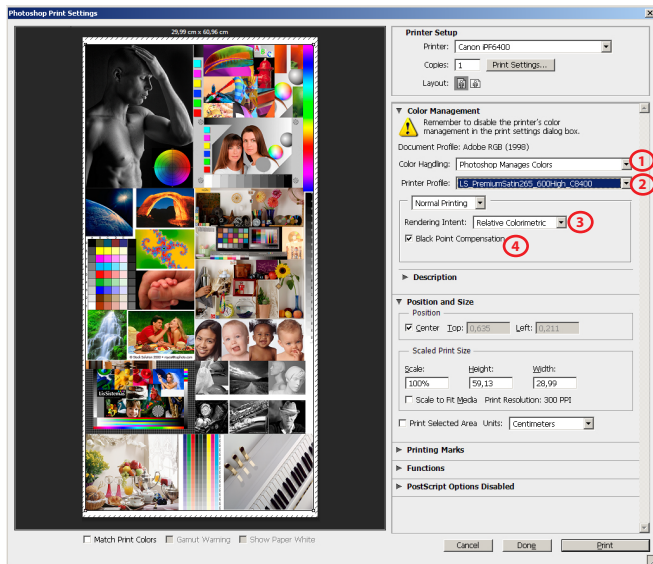


## GUIDE FOR PRINTING ON WINDOWS

Install Profiles on Windows ---> c:/windows/system32/spool/drivers/color

## PHOTOSHOP SETTINGS



1) Color Handling - Photoshop Manages Colors

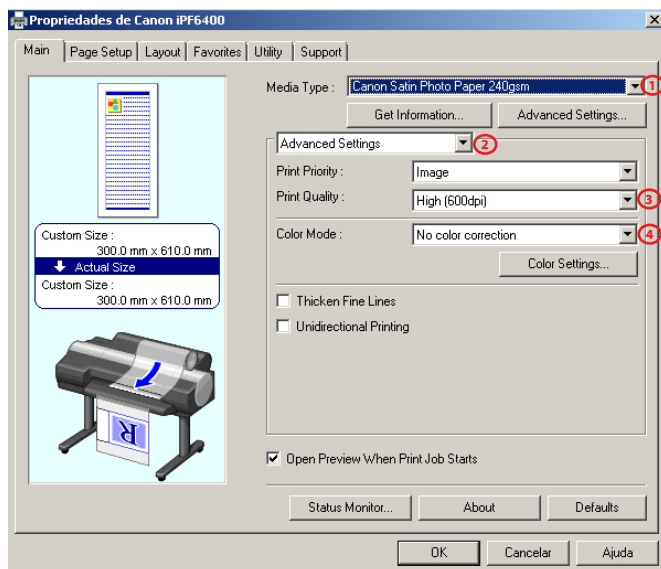
2) Printer Profile

*LS\_CanvasMatt380\_600Std\_Cx300\_MK.icm*

3) Rendering Intent - Relative Colorimetric

4) Black Point Compensation activated

## DRIVER SETTINGS



1) Media Type

*Special 6*

2) Advanced Settings

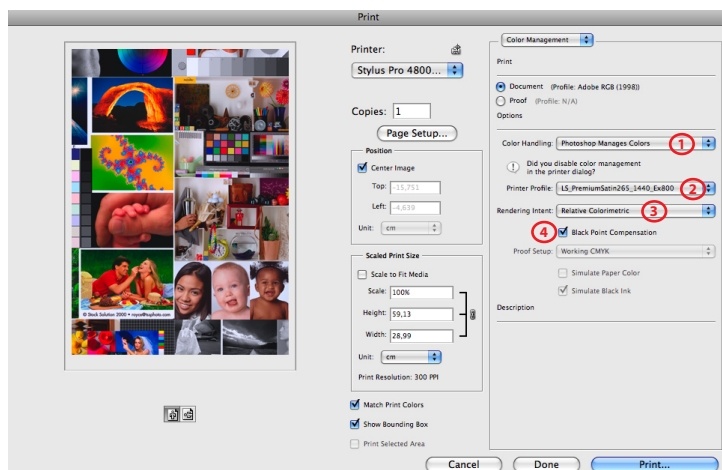
3) Print Quality - Standard (600dpi)

4) Color Mode - No color correction

## GUIDE FOR PRINTING ON MAC OS X

Install Profiles on Mac OS X ---> Macintosh HD > User > Library > ColorSync > Profiles

## PHOTOSHOP SETTINGS



1) Color Handling - Photoshop Manages Colors

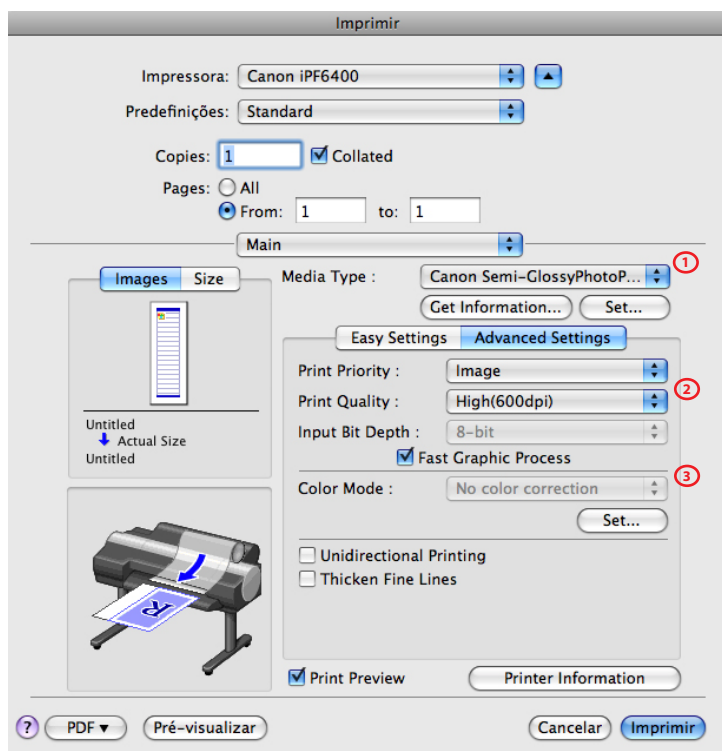
2) Printer Profile

*LS\_CanvasMatt380\_600Std\_Cx300\_MK.icm*

3) Rendering Intent - Relative Colorimetric

4) Black Point Compensation activated

## DRIVER SETTINGS



1) Media Type

*Special 6*

2) Print Quality - Standard (600dpi)

3) Color Mode - No color correction