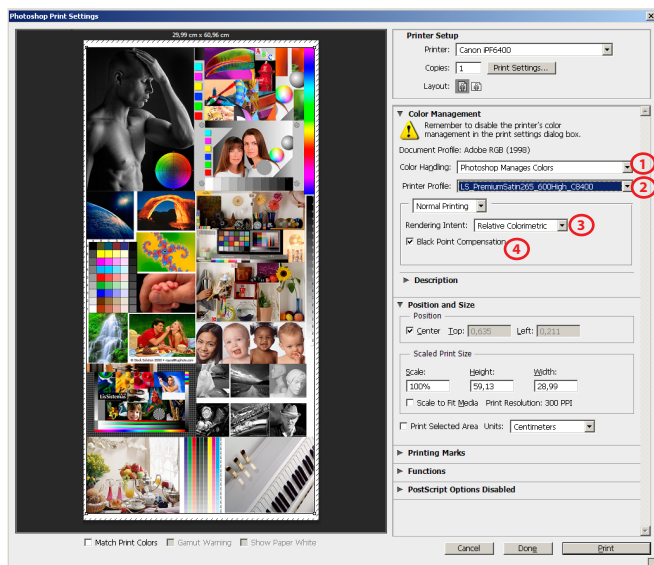


## GUIDE FOR PRINTING ON WINDOWS

Install Profiles on Windows ---> c:/windows/system32/spool/drivers/color

## PHOTOSHOP SETTINGS



1) Color Handling - Photoshop Manages Colors

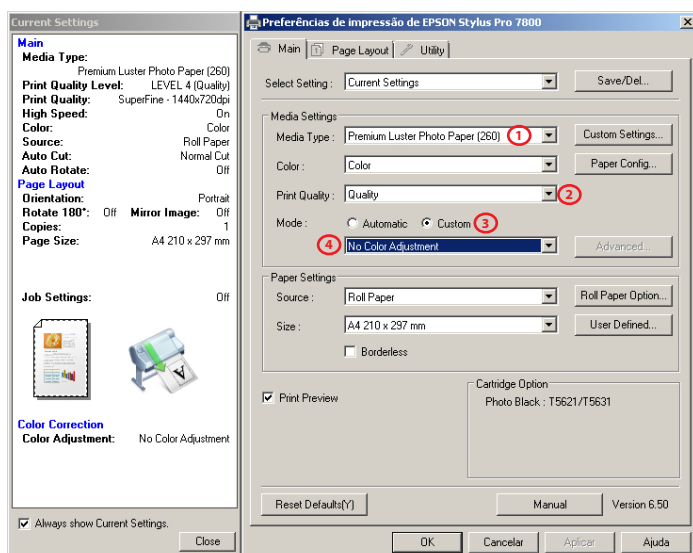
2) Printer Profile

*LS\_OutDVinilMatt\_720\_Ex890\_MK.icc*

3) Rendering Intent - Relative Colorimetric

4) Black Point Compensation activated

## DRIVER SETTINGS



1) Media Type

*Enhanced Synthetic Paper*

2) Print Quality - Quality 3 (720x720ppp)

3) Mode - Custom

4) No Color Adjustment



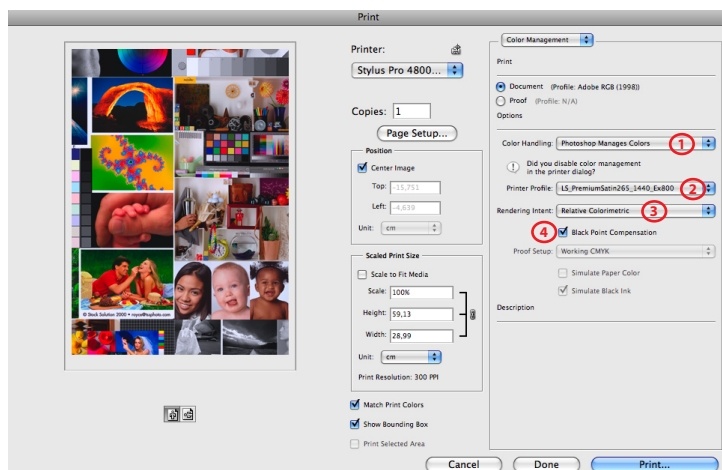
**EPSON SPx890**

**LS OUTDOOR VINIL MATT 100/125um**

## GUIDE FOR PRINTING ON MAC OS X

**Install Profiles on Mac OS X** ---> Macintosh HD > User > Library > ColorSync > Profiles

## PHOTOSHOP SETTINGS



**1) Color Handling** - Photoshop Manages Colors

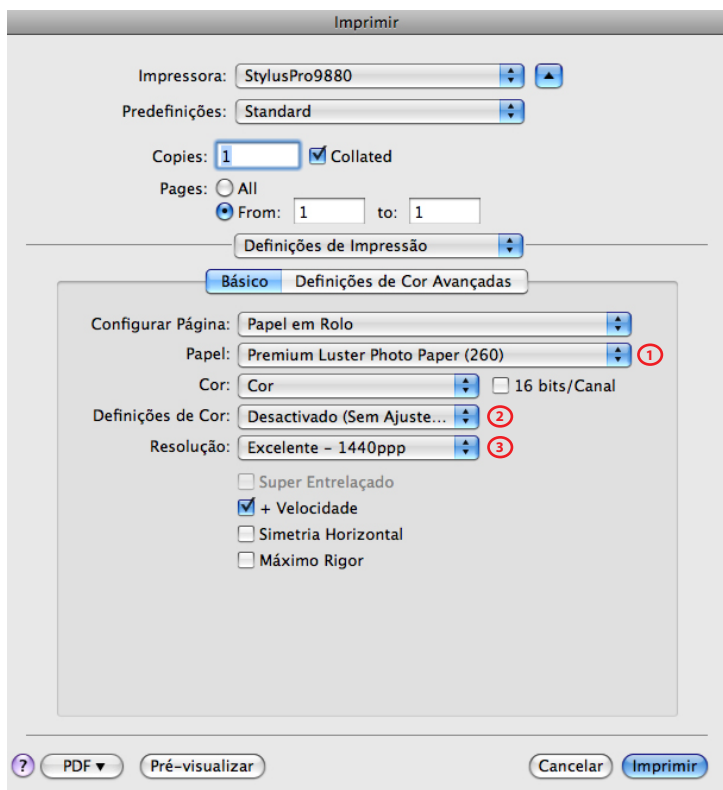
**2) Printer Profile**

*LS\_OutDVinilMatt\_720\_Ex890\_MK.icc*

**3) Rendering Intent** - Relative Colorimetric

**4) Black Point Compensation** activated

## DRIVER SETTINGS



**1) Media Type**

*Enhanced Synthetic Paper*

**2) Color Mode** - No Color Adjustment

**3) Print Quality** - Quality 3 (720x720ppp)