

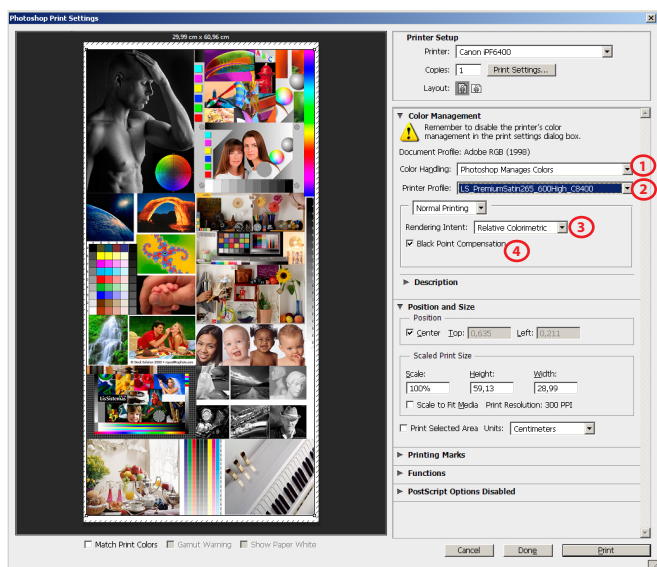


EPSON SC-P6000/P8000 HAHNEMUHLE STUDIO ENHANCED 210g

GUIDE FOR PRINTING ON WINDOWS

Install Profiles on Windows ---> c:/windows/system32/spool/drivers/color

PHOTOSHOP SETTINGS



1) Color Handling - Photoshop Manages Colors

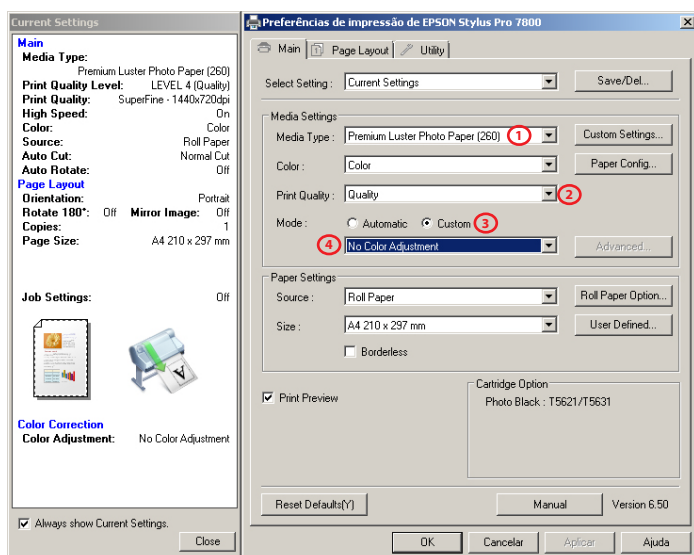
2) Printer Profile

HFA_StudioEnhanced210_1440_EP6_8000_MK.icm

3) Rendering Intent - Relative Colorimetric

4) Black Point Compensation activated

DRIVER SETTINGS



1) Media Type
Velvet FineArt Paper

2) Print Quality - Quality 4 (1440x720ppp)

3) Mode - Custom

4) No Color Adjustment

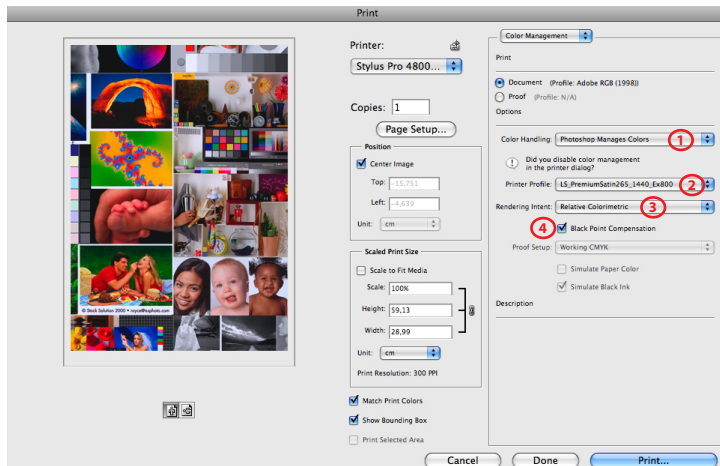


EPSON SC-P6000/P8000 HAHNEMUHLE STUDIO ENHANCED 210g

GUIDE FOR PRINTING ON MAC OS X

Install Profiles on Mac OS X ---> Macintosh HD > Library > ColorSync > Profiles

PHOTOSHOP SETTINGS



1) Color Handling - Photoshop Manages Colors

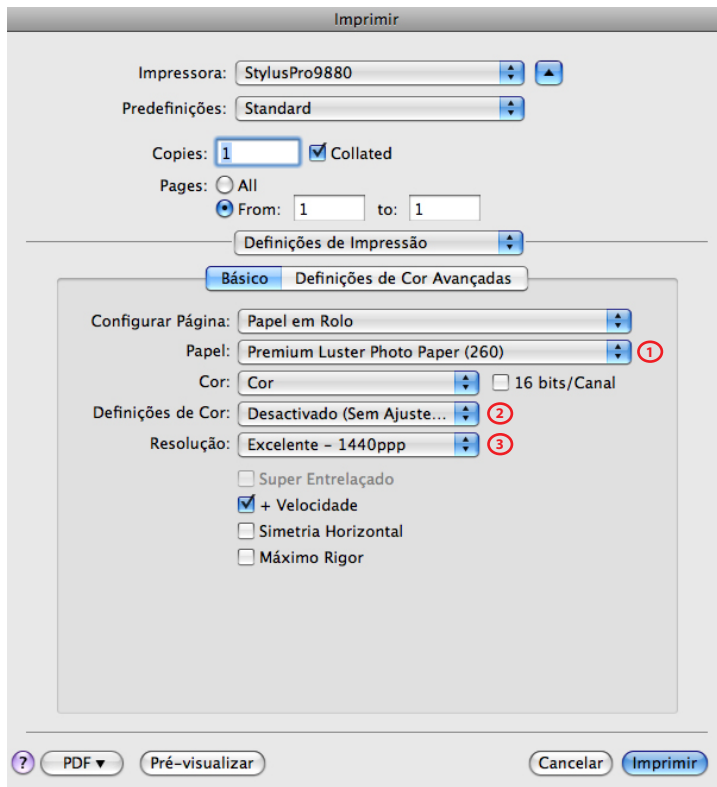
2) Printer Profile

HFA_StudioEnhanced210_1440_EP6_8000_MK.icm

3) Rendering Intent - Relative Colorimetric

4) Black Point Compensation activated

DRIVER SETTINGS



1) Media Type

Velvet FineArt Paper

2) Color Mode - No Color Adjustment

3) Print Quality - Quality 4 (1440x720ppp)