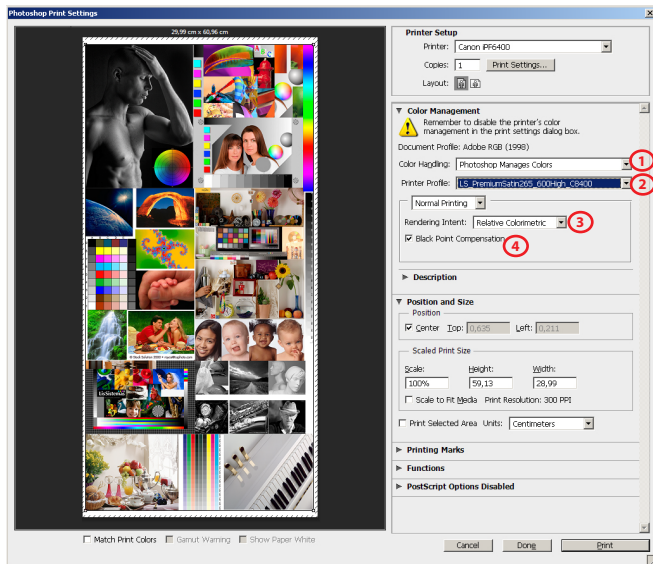


GUIDE FOR PRINTING ON WINDOWS

Install Profiles on Windows ---> c:/windows/system32/spool/drivers/color

PHOTOSHOP SETTINGS



1) Color Handling - Photoshop Manages Colors

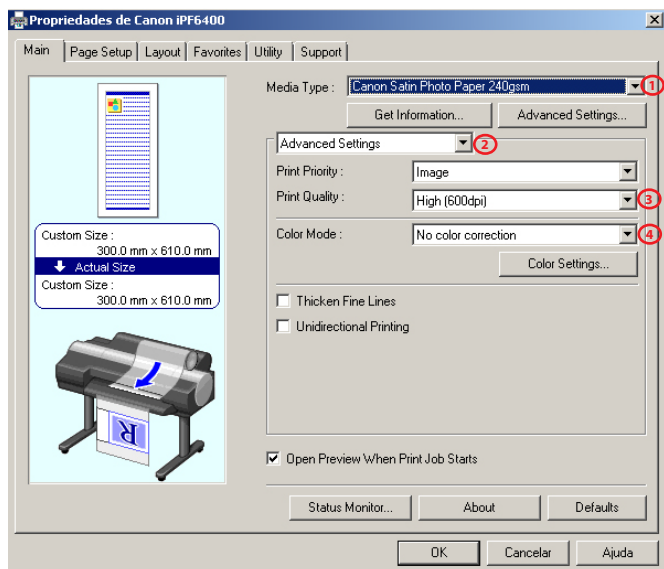
2) Printer Profile

HFAPhoto_Can9100_MK_HahnemuehlePhotoMattFibreDuo.icc

3) Rendering Intent - Relative Colorimetric

4) Black Point Compensation activated

DRIVER SETTINGS



1) Media Type
Special 9

2) Advanced Settings

3) Print Quality - Highest (600dpi)

4) Color Mode - No color correction

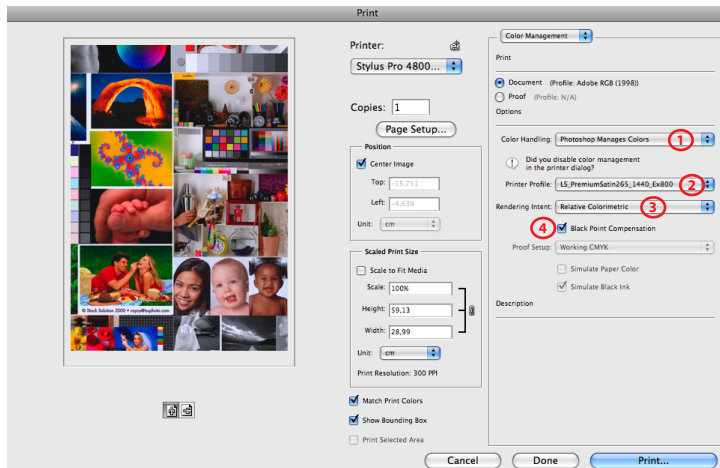
CANON iPF x100

HAHNEMUHLE STUDIO ENHANCED 210g

GUIDE FOR PRINTING ON MAC OS X

Install Profiles on Mac OS X ---> Macintosh HD > User > Library > ColorSync > Profiles

PHOTOSHOP SETTINGS



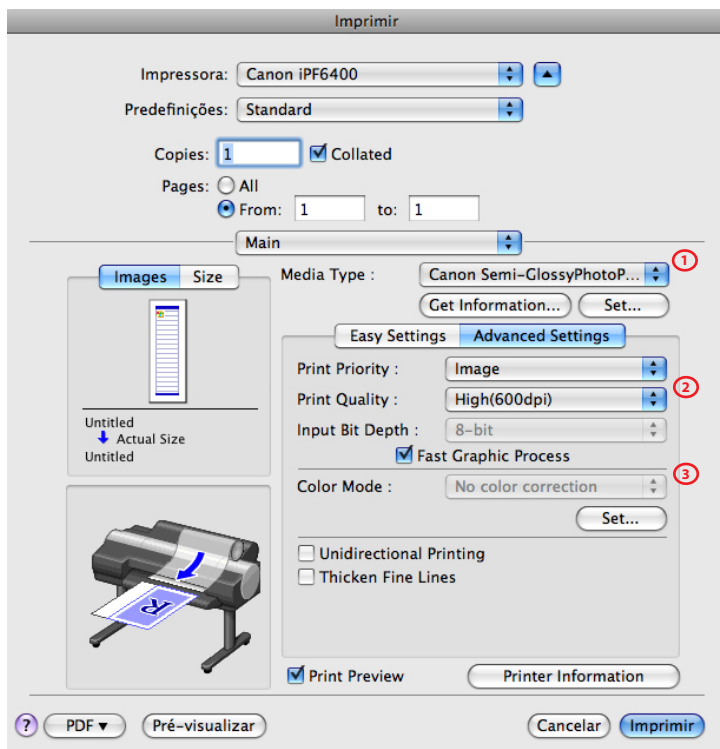
1) Color Handling - Photoshop Manages Colors

2) Printer Profile

HFAPhoto_Can9100_MK_HahnemuehlePhotoMattFibreDuo.icc

3) Rendering Intent - Relative Colorimetric

DRIVER SETTINGS



1) Media Type
Special 9

2) Print Quality - Highest (600dpi)

3) Color Mode - No color correction